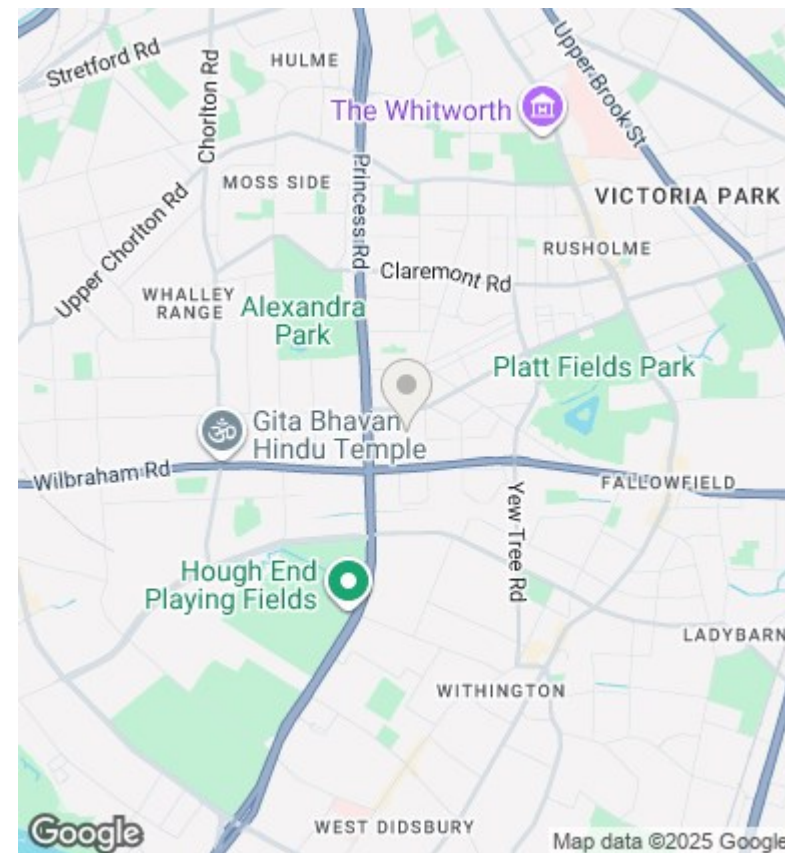
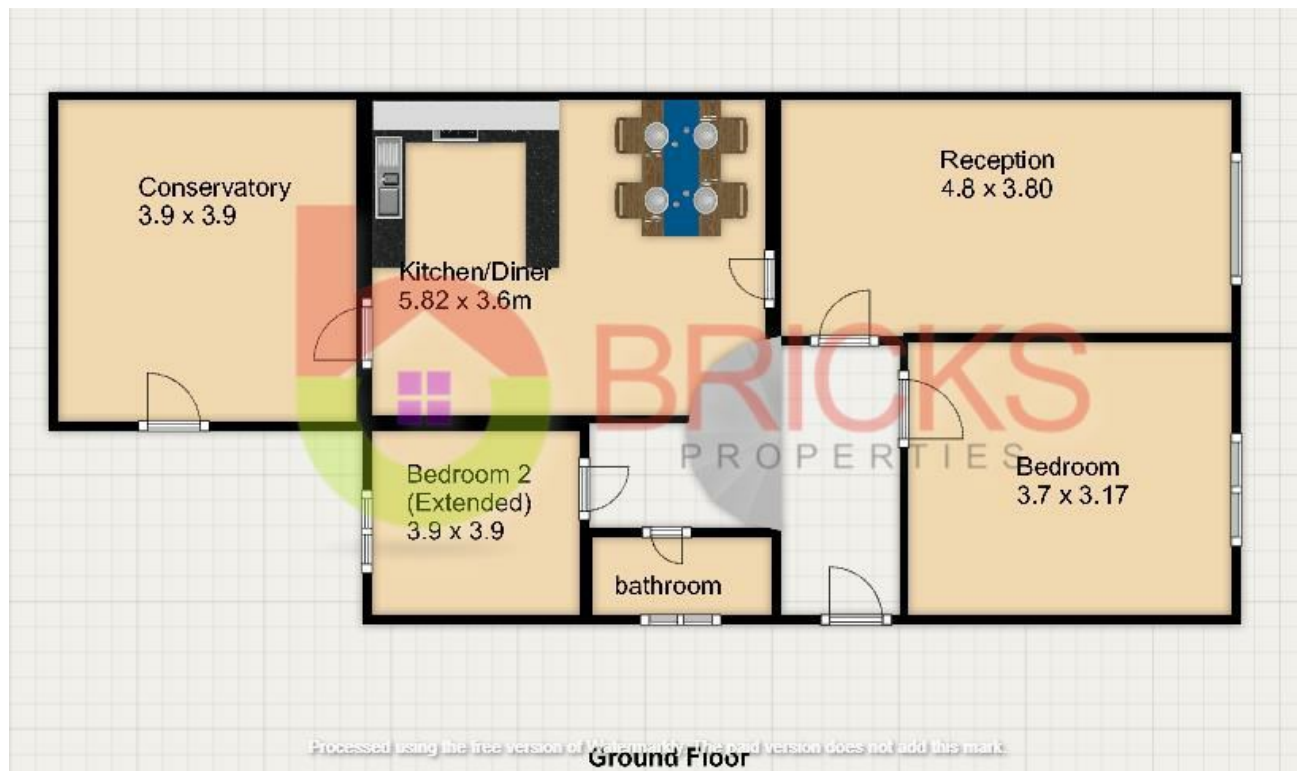




Morley Avenue Manchester, M14 7HB

Offers Over £359,950

- Spacious 5-bedroom semi-detached Family Home
- Two modern bathrooms
- Front driveway with ample off-road parking
- Excellent transport Manchester City centre and M60 Motorway
- Two bright reception rooms with EPC C band
- Spacious conservatory at back
- Double glazed and Central Heating
- Large and modern kitchen
- Generous rear garden
- Close to Whalley Range School & William Hulme Grammar School



Viewings

Viewings by arrangement only. Call 0161 804 3480 to make an appointment.

Energy Efficiency Rating		
	Current	Potential
Very energy efficient - lower running costs		
(92 plus) A		
(81-91) B		
(69-80) C		
(55-68) D		
(39-54) E		
(21-38) F		
(1-20) G		
Not energy efficient - higher running costs		
England & Wales		
	EU Directive 2002/91/EC	

72